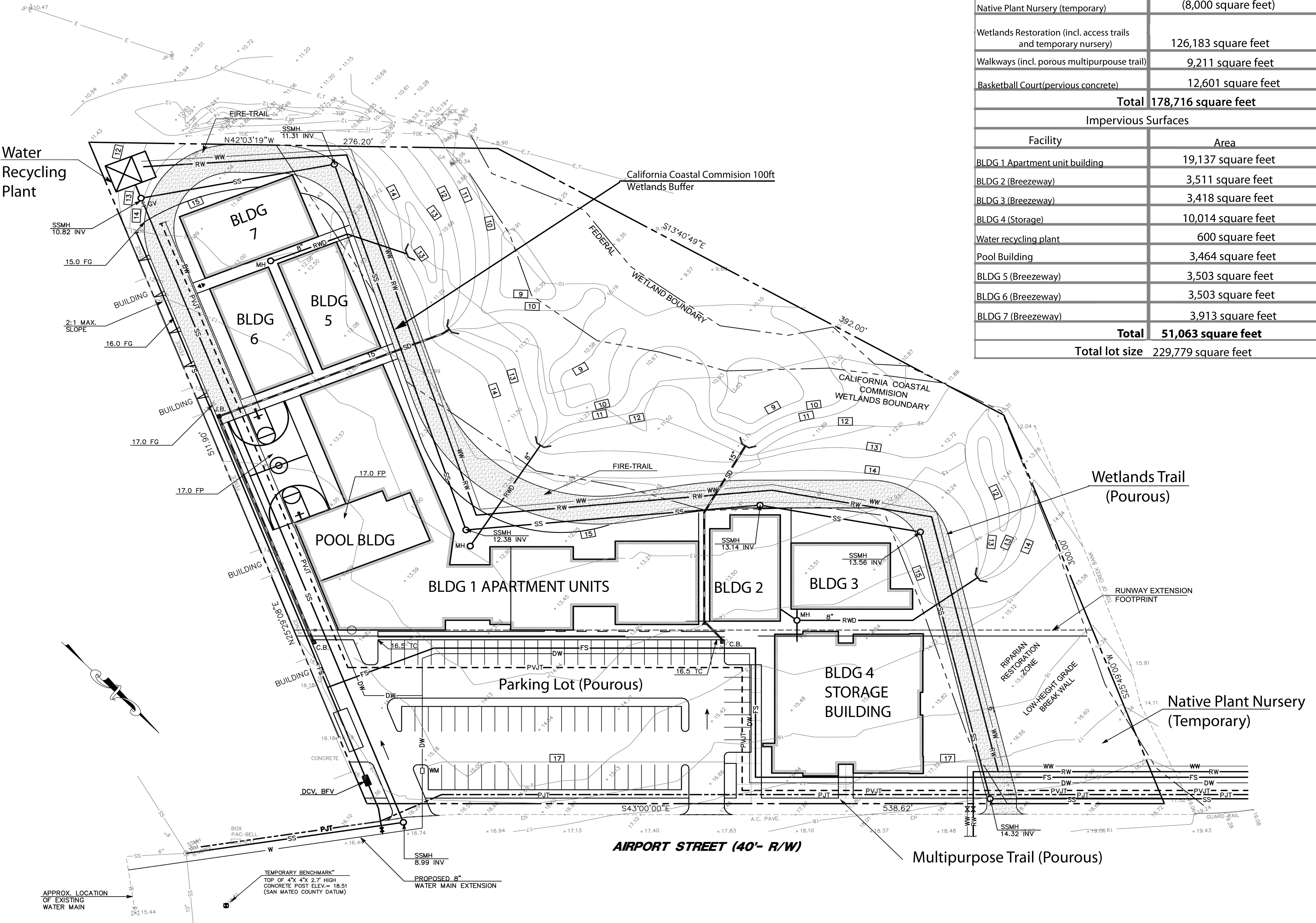


FIGURE 1.1.1: WELLNESS CENTER SITE PLAN



| Pervious Surfaces | |
|--|----------------------------|
| Facility | Area |
| Porous Parking Lot (incl. islands) | 30,721 square feet |
| Native Plant Nursery (temporary) | (8,000 square feet) |
| Wetlands Restoration (incl. access trails and temporary nursery) | 126,183 square feet |
| Walkways (incl. porous multipurpose trail) | 9,211 square feet |
| Basketball Court(pervious concrete) | 12,601 square feet |
| Total | 178,716 square feet |
| Impervious Surfaces | |
| Facility | Area |
| BLDG 1 Apartment unit building | 19,137 square feet |
| BLDG 2 (Breezeway) | 3,511 square feet |
| BLDG 3 (Breezeway) | 3,418 square feet |
| BLDG 4 (Storage) | 10,014 square feet |
| Water recycling plant | 600 square feet |
| Pool Building | 3,464 square feet |
| BLDG 5 (Breezeway) | 3,503 square feet |
| BLDG 6 (Breezeway) | 3,503 square feet |
| BLDG 7 (Breezeway) | 3,913 square feet |
| Total | 51,063 square feet |
| Total lot size | 229,779 square feet |

DATE: 07/28/08
BY: VPG
DESCRIPTION: PRELIMINARY GRADING / DRAINAGE AND UTILITY PLAN WITH PERMANENT STORM WATER CONTROLS

REVISIONS
REV: 1
DATE: 07/28/08
DESCRIPTION: PRELIMINARY GRADING / DRAINAGE AND UTILITY PLAN WITH PERMANENT STORM WATER CONTROLS

MACLEOD AND ASSOCIATES
CIVIL ENGINEERING • LAND SURVEYING
965 CENTER STREET • SAN CARLOS, CA 94070 • (650) 593-8580

PREPARED FOR:
BIG WAVE LLC

PRINCIPAL BY THE SEA
SAN MATEO COUNTY
CALIFORNIA

DRAWN BY: AAP
DESIGNED BY: VPG
CHECKED BY: DGM
SCALE: 1"= 30'
DATE: 07/28/08
DRAWING NO. 1584-00
SHEET C-1